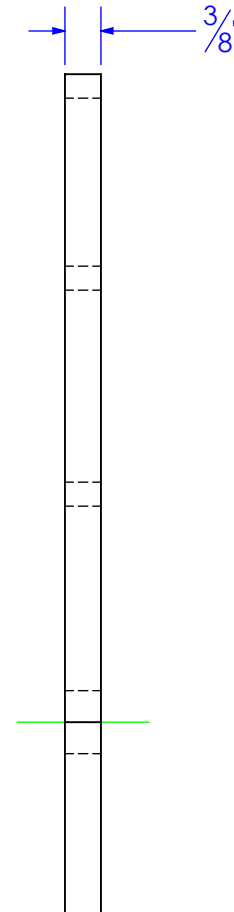
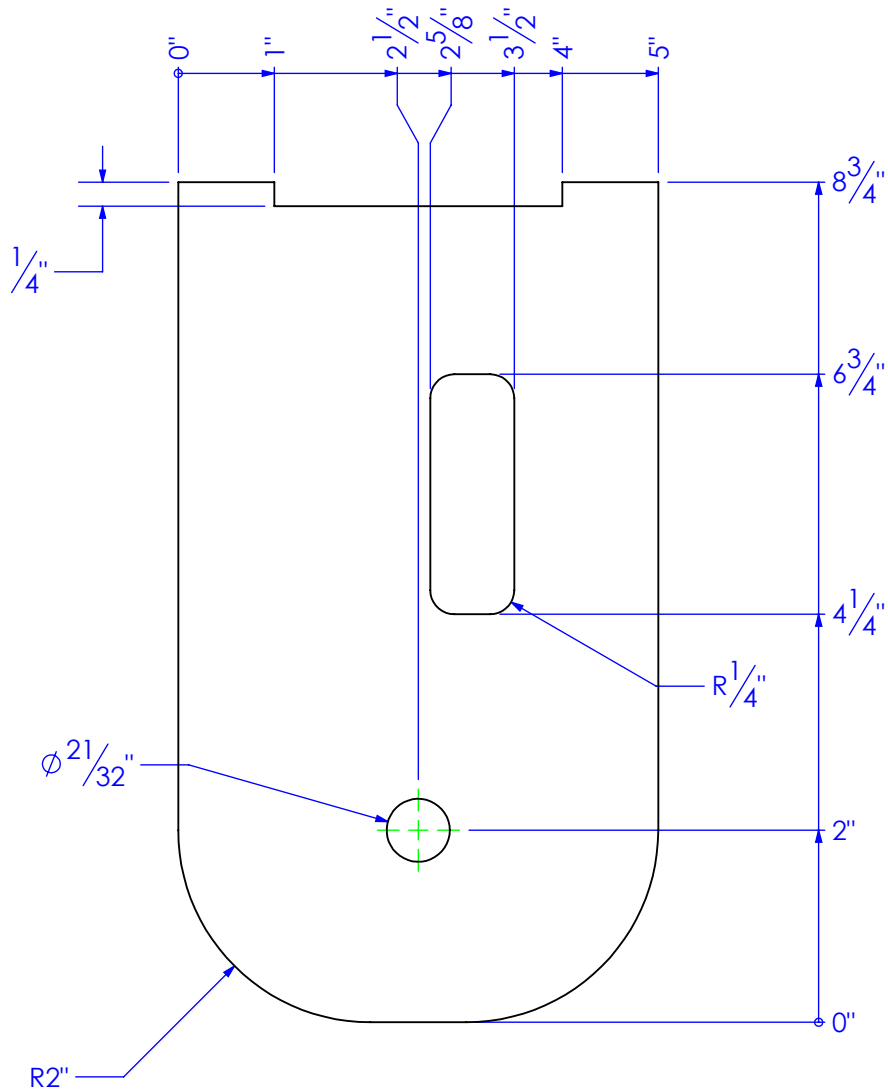


PART NUMBER	DESCRIPTION	MATERIAL
FP-HF8-MTR PIV PLT	PLATE, MOTOR PIVOT, HYDRA FIGURE 8	3/8" HRS



REVISIONS			
REV.	DESCRIPTION	DATE	APPROVED
A	INITIAL RELEASE	6/26/2019	
B	REVISE PROFILE AND MIDDLE SLOT	2/4/2020	



PROPRIETARY AND CONFIDENTIAL
 THE INFORMATION CONTAINED IN THIS
 DRAWING IS THE SOLE PROPERTY OF TRIPLE
 C INC. ANY REPRODUCTION IN PART OR
 AS A WHOLE WITHOUT THE WRITTEN
 PERMISSION OF TRIPLE C, INC IS PROHIBITED.

UNLESS OTHERWISE SPECIFIED:
 DIMENSIONS ARE IN INCHES
 TOLERANCES:
 FRACTIONAL $\pm 1/16$
 ANGULAR: MACH ± 1 BEND \pm
 TWO PLACE DECIMAL $\pm .010$
 THREE PLACE DECIMAL $\pm .005$

MATERIAL 3/8" HRS
 DO NOT SCALE DRAWING

	NAME	DATE	P.O. BOX 248, SABETHA, KS 66534 (785) 284-3674 FAX (785) 284-3931		
D: DRAWN	ETHAN	2/4/2020			
PART #	FP-HF8-MTR PIV PLT				
ASM #					
COMMENTS:					
PLATE, MOTOR PIVOT, HYDRA FIGURE 8					
			SIZE	DWG. NO.	REV
			A	12-2492	B
			SCALE: 1:2	WEIGHT: 4.13	SHEET 1 OF 1